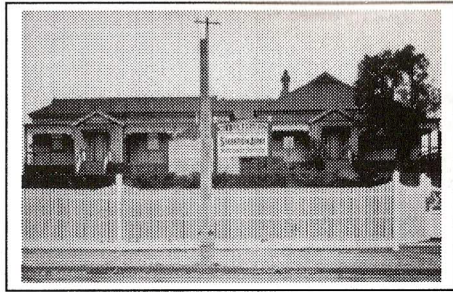


HOPETOUN MATERNITY HOSPITAL

- *Harvest Road, North Fremantle, Western Australia 1903 - 1922*

Residential care for unmarried mothers was included in The Salvation Army's programme at the Cornelia Home in 1898, and was temporarily transferred in 1903 to a leased property in Swan Street, North Fremantle.

A little later in 1903, a further move was made to a nearby property that the Army purchased in Harvest Road North Fremantle.



At that stage the maternity home became known as Hopetoun Maternity Hospital.

The War Cry reported the opening of Hopetoun maternity hospital, stating it had accommodation for 18 girls (later accommodating up to 24) and was staffed by five Salvation Army officers.³⁴ It was to be self-supporting as far as possible, assisted by means of making and selling sewing and fancy work.

During the ensuing two decades additional land was purchased and improvements made to the property. Hopetoun maternity hospital was well supported by the community, so that when a move to a new location was contemplated and came to fruition in 1922, the citizen's of North Fremantle were pleased to find the hospital's new address was still Harvest Road North Fremantle, albeit further up the hill.

³⁴ *The War Cry* dated 23 May 1903