

# Kildonan Residential Units

c. 1958 – 2003?

**Other Names:** • Kildonan Family Group Homes

## Details

---

Kildonan Residential Units came into being in around 1958, when Kildonan set up its first family group home next-door to the Kildonan children's Home in Burwood. The Burwood Home was sold in 1960, and seven more family group homes were purchased in the eastern suburbs. In 1989, Richmond Community Care Inc. Took over the management three of Kildonan's residential units.

Kildonan Residential Units came into being around 1958, when a property adjoining the Children's Home in Burwood was purchased to be used as Kildonan's first family group home, on an experimental basis.

Subsequently, several homes in the eastern suburbs of Melbourne were purchased as Kildonan moved away from 'institutional' care towards the family group home model.

At various times, Kildonan family group homes were located at Blackburn, Box Hill, Burwood, East Malvern, Syndal, North Balwyn, Canterbury, Hawthorn, Richmond, Fitzroy, Collingwood, Epping, Thomastown, Eltham, Hurstbridge, and Wattle Park.

In 1989, Richmond Community Care Inc. Took over the management of the three residential units formerly managed by Kildonan.

In 2007, Kildonan Uniting Care became the custodian of records of the programs run by Kildonan Homes for Children.

## Gallery

---



**Family group Home, Main St., Blackburn**

**Description:** This photograph was published in the Kildonan Children's Home Annual Report, 1961. It shows the front of a brick cottage, with a lawn and low brick fence in front. The description published alongside the photograph reads "Family Group Home, Main St., Blackburn - three bedrooms are being added, a 30ft. X 45 ft. garage gives much-needed storage space".



**Family Group Home, Lalwa St., Blackburn**

**Description:** This photograph was published in the Kildonan Children's Home Annual Report, 1961. It shows the front of a large brick cottage, with lawn, trees, and a low brick fence in front. The description published alongside the photograph reads "Family Group Home, Lalwa St., Blackburn - a quiet tree-lined street."

---



### **Family Group Home, Finch St., Glen Iris**

**Description:** This photograph was published in the Kildonan Children's Home Annual Report, 1961. It shows the front of a two-storey rendered brick house, with a front porch and front hedge. A woman is standing in front of the house. The description published alongside the photograph reads "Family Group Home, Finch St., Glen Iris - an old place renovated, a homely, comfortable house."

---



### **Family Group Home, Morshead St., Syndal**

**Description:** This photograph was published in the Kildonan Children's Home Annual Report, 1961. It shows the front of a brick cottage, with lawn and a low brick fence in front. A child plays on the lawn while two adults stand nearby, and another child can be seen on the front steps of the house. The description published alongside the photograph reads "Family Group Home, Morshead St., Syndal - an area of new houses and young families."

---



### **Family Group Home, Kangerong Rd., Box Hill**

**Description:** This photograph was published in the Kildonan Children's Home Annual Report, 1961. It shows the front of a brick cottage with double garage, with lawn and a low brick fence in front. The description published alongside the photograph reads "Family Group Home, Kangerong Road, Box Hill - an old home renovated - close to schools and Church."

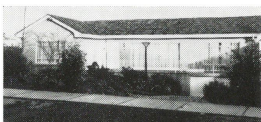
---



### **Family Group Home, Elgar Rd., Surrey Hills**

**Description:** This photograph was published in the Kildonan Children's Home Annual Report, 1961. It shows the front of a brick cottage with double garage, with lawn and a low brick fence in front. The description published alongside the photograph reads "Family Group Home, Elgar Rd., Surrey Hills - a new brick house close to Wattle Park."

---



### **Family Group Home, Ellsa St., North Balwyn**

**Description:** This photograph was published in the Kildonan Children's Home Annual Report, 1961. It shows the front of a wide house with hedges in front. The description published alongside the photograph reads "Family Group Home, Ellsa St., North Balwyn - a large, new house built on two levels."

---



### **Kildonan Family Group Home, Main Street Blackburn**

**Description:** This is a photograph of the Kildonan Family Group Home at Main Street, Blackburn. It was published by the Presbyterian Social Services Department in a pamphlet titled *The Work of Presbyterian Social Services*. It shows the front of a single-storey house with a driveway to the side and young trees planted on the front lawn.

---



### **Kildonan Family Group Home, Moselle Street, Box Hill**

**Description:** This is a photograph of a Family Group Home run by Kildonan at 36 Moselle Street, Box Hill. It was published by the Presbyterian Social Services Department in a pamphlet titled *The Work of Presbyterian Social Services*. It shows the front of a single-storey brick house with an asymmetrical roof, large windows, and brick front fence.

---



## No. 80 Elgar Road - Our first family group home

**Description:** This is an image of the first Family Group Home opened by Kildonan Homes for Children at their main site, 80 Elgar Road Burwood. It shows a small weatherboard cottage with a tin roof surrounded by lawn and small trees. This photograph was published in Kildonan's annual report for either 1958 or 1959.

---

## More info

---

### Related Entries

#### Run by

- [Kildonan Child and Family Services \(c. 1993 - 2007\)](#)  
Kildonan Child and Family Services ceased to provide residential care in January 2003.  
Date: 1993 - 2003
- [Kildonan Homes for Children \(c. 1960 - c. 1993\)](#)  
Date: 1960 - 1993
- [Richmond Community Care Incorporated \(1989 - current\)](#)  
In 1989, Richmond Community Care Incorporated took over the management of 3 residential units, formerly run by Kildonan  
Date: 1989 -

### Resources

- James Jenkinson Consulting, [Guide to Out-of-Home Care Services 1940-2000 - Volume Two: Data Base](#), November 2001

## Records

---

For more information and to access your records, follow the links below:

### Records

- [Kildonan UnitingCare Records \(1881 - 2001\)](#)
- 

You can view this page online by visiting <https://www.findandconnect.gov.au/entity/kildonan-residential-units/>