

The Harbour

1898 – 1994

Other Names: • Hillview House

Details

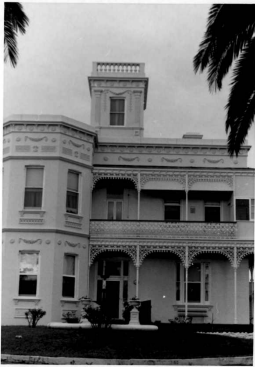
The Harbour, in West Brunswick, was established by the Salvation Army in 1898. It operated as a maternity home and home for young women aged 14 to 18. It closed in 1994.

The Harbour was situated in Cohuna Street, West Brunswick.

According to the DHHS guide 'Finding Records', the commercial laundry that operated at the Harbour closed in the 1960s. From that time, the institution focused on the needs of teenage girls, supporting their transition to independent living. From the mid 1960s until it closed in 1994, the institution was known as Hillview House.

The Harbour was mentioned in the *Commonwealth Contribution to Former Forced Adoption Policies and Practices Inquiry* (2012) as an institution that was involved in forced adoption.

Gallery



Brunswick. "The Harbour" Salvation Army Hostel 20 Cohuna St.

More info

Related Entries

Run by

- [The Salvation Army Australia Southern Territory \(1921 - 2018\)](#)
- [The Salvation Army, Australian Territory \(1880 - 1921\)](#)

Related Events

- [Case Study 30: Youth detention centres, Victoria, Royal Commission into Institutional Responses to Child Sexual Abuse \(2015\)](#)
The Harbour was briefly mentioned in Case Study 30: Youth detention centres, Victoria, Royal Commission into Institutional Responses to Child Sexual Abuse, but was not the primary focus of the study.
- [Inquiry into Commonwealth Contribution to Former Forced Adoption Policies and Practices, Commonwealth of Australia \(2011 - 2012\)](#)
The Harbour was mentioned in submissions 130 and 157 to the Inquiry Committee as an institution that was involved in forced adoption.

Resources

- [Social Institutions of the Salvation Army](#), The Argus, 26 February 1898
- Royal Commission into Institutional Responses to Child Sexual Abuse, [Report of Case Study No. 30: The response of Turana, Winlato and Baltara, and the Victoria Police and the Department of Health and Human Services Victoria to allegations of child sexual abuse](#), April 2016. *Relevance:* The Harbour was briefly mentioned in Case Study 30: Youth detention centres, Victoria, Royal Commission into Institutional Responses to Child Sexual Abuse, but was not the primary focus of the study
- [Hillview House \(1965-94\)](#), Finding Records, No date. *Relevance:* See the 'List of records held by the department' section for information about records relating to The Harbour
- Cleland, Sharon, [Caring for the Children: A history of institutional care provided by The Salvation Army for Australian children and youth \(1893-1995\)](#), August 2012
- Kirkham, John C, *Southern Soup-Soap-Salvation, a compendium of Salvation Army Social Services in the Australian Southern Territory*, 2003

Records

For more information and to access your records, follow the links below:

Records

- [Salvation Army Australia, Records of Homes in the former Southern Territory \(c. 1889 - c. 1988\)](#)
-

You can view this page online by visiting <https://www.findandconnect.gov.au/entity/the-harbour/>