

# Departmental Family Group Homes, Victoria

1956 – 2000s

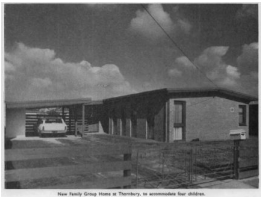
## Details

---

From the mid 1950s the State Government of Victoria, via its various departments governing child welfare, operated a large number of family group homes under its Family Group Home Program. These Family Group Homes were located in inner and outer suburban Melbourne as well as in more regional locations across the state. The opening and closing dates for many of these family group homes are not yet known.

## Gallery

---



### **New family group home at Thornbury, to accommodate four children**

**Description:** This is a copy of an image published in the annual report of the Social Welfare Department for 1969-70



### **The Premier, the Hon. H.E. Bolte, discusses 'Moonyah' Family Group Home at Coburg with Cottage Mother, Catherine Kurth**

**Description:** This is a copy of an image published in the annual report for the Victorian Children's Welfare Department for 1957.

## More info

---

## Related Entries

### Run by

- [Department of Human Services, State Government of Victoria \(1995 - December 2014\)](#)
- [Children's Welfare Department, State Government of Victoria \(1924 - 1960\)](#)

Date: 1956 - 1960

- [Social Welfare Branch, State Government of Victoria \(1960 - 1970\)](#)  
Date: 1960 - 1970
- [Social Welfare Department, State Government of Victoria \(1970 - 1978\)](#)  
Date: 1970 - 1978
- [Department of Community Welfare Services, State Government of Victoria \(1978 - 1985\)](#)  
Date: 1978 - 1985
- [Community Services Victoria, State Government of Victoria \(1985 - 1992\)](#)
- [Health and Community Services, State Government of Victoria \(1992 - 1995\)](#)

#### Related Organisations

- [Family Group Home Program \(1956 - 2000s\)](#)

## Other Resources

---

**Title:** Departmental Family Group Homes, November 1977

**Type:** Image

**Date:** 11 November 2014

[Details](#)

---

## Records

---

For more information and to access your records, follow the links below:

### Records

- [Victorian Government Wardship and/or Out of Home Care Records \(1864 - current\)](#)
  - [Welfare Photographs and Publications \(c. 1956 - c. 1960\)](#)
  - [Voluntary Children's Homes Files \(1921 - 1989\)](#)
  - [Correspondence files, single number series with 'B' \[Child Endowment\] prefix \(1904 - 1974\)](#)
- 

You can view this page online by visiting <https://www.findandconnect.gov.au/entity/departamental-family-group-homes-victoria/>