

Salvation Army Girls' Hostel

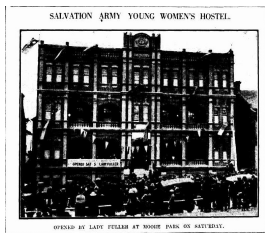
1912 – 1973

Other Names: • Salvation Army Young Women's Hostel

Details

The Young Women's Hostel was a Salvation Army Hostel for girls and young women that was opened in 1912 in Elizabeth Street, Sydney. It closed in 1924 and moved to Moore Park, where it held up to 130 girls. It operated until 1973 as a hostel for working girls.

Gallery



Salvation Army Young Women's Hostel

Description: This is a copy of an image from the newspaper article, *Salvation Army - Girls' Hostel - Opened by Lady Fuller*, published in *The Sydney Morning Herald* on Monday 7 July 1924. The image shows the front of the Salvation Army Girls' Hostel.

More info

Related Entries

Run by

- [The Salvation Army, Australian Territory \(1880 - 1921\)](#)
- [The Salvation Army Australia Eastern Territory \(1921 - 2018\)](#)

Records

For more information and to access your records, follow the links below:

Records

- [Salvation Army Australia, Records of Homes in the former Eastern Territory \(c. 1891 - 1990s\)](#)
-

You can view this page online by visiting <https://www.findandconnect.gov.au/entity/salvation-army-girls-hostel/>