

Gosford Farm Home for Boys

1911 – 1923

Other Names:

- Mount Penang
- Mt Penang
- Gosford Reformatory

Details

Gosford Farm Home for Boys was a reformatory established by the Department of Public Instruction. It was officially opened in 1913 but boys lived there from 1911, as they laboured to build it. The farm home occupied a 700 acre site on Penang Mountain (Mount Penang), near Kariong. It housed boys moved from the Brush Farm Reformatory and the training vessel the *Sobraon*. Gosford Farm Home for Boys was transferred to the Child Welfare Department in 1923 and became the Gosford Training School.

Gosford Farm Home was formally opened in 1913, but had begun in November 1911, when a party of boys from *Sobraon* arrived on Penang Mountain, under the leadership of Assistant Superintendent Herbert Wood.

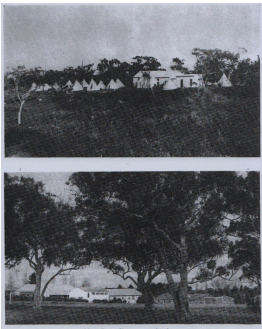
The Minister for Public Instruction, G.S. Beeby, and a committee including Sir Charles Mackellar of the State Children's Relief Board and Frederick Stayner, of Brush Farm Reformatory, selected a 700 acre site on Penang Mountain, near Kariong, for the new home. The site was considered healthy, with beautiful natural surroundings, good water and sufficient land for cultivation.

By 1912 most of the boys from Brush Farm had been moved to the site and work began in earnest. The boys slept in bell tents, in all weathers, while they cleared forest and built dormitories, staff quarters and mess rooms. This was hard, uncomfortable work, but was seen as essential to the reform and development of the boys.

Life for boys at Gosford Farm Home consisted of farm work, with some rudimentary training in skills like boot making. Prayer, marching and drills were all part of the routine.

The site of Gosford Farm Home for Boys is, IN 2014, part of Mt Penang Parklands.

Gallery



Mount Penang 50 years ago and to-day

Description: This is a copy of an image that appeared in the Child Welfare Department of New South Wales Annual Report of 1962.

More info

Chronology

- Carpentarian Reformatory for Boys (1894 - c. 1908)
 - Brush Farm Reformatory (1908 - 1912)
- **Gosford Farm Home for Boys (1911 – 1923)**
 - Gosford Training School (1923 - 1945)
 - Mount Penang Training School for Boys (1946 - 1987)
 - Mount Penang Detention Centre (1988 - 1991)
 - Mt Penang Juvenile Justice Centre (1991 - 1999)

Related Entries

Run by

- [Department of Public Instruction \(1880 - 1915\)](#)

The Department of Public Instruction established the Gosford Farm Home for Boys in 1912 and operated it until the Child Welfare Act was introduced in 1923.

Date: 1912 - 1923

Related Organisations

- [Raymond Terrace Home \(1913 - 1930?\)](#)

Some boys from Raymond Terrace Home who committed crimes at Raymond Terrace Home, such as absconding, were transferred to Gosford Farm Home

Resources

- [Mr. Walter Bethel](#), The Sydney Morning Herald, 7 March 1929
- Department of Justice, [History](#), Children's Court of New South Wales, 2012
- Central Coast Regional Development Corporation, [History of Mt Penang Parklands](#), No date
- [Fifth Sectional Report Covering the Administration of the Acts relating to State Children](#), Royal Commission to Inquire into the Public Service of New South Wales, August 1920

Records

For more information and to access your records, follow the links below:

Records

- [Departmental Records relating to State Wards, New South Wales \(1918 - current\)](#)
-

You can view this page online by visiting <https://www.findandconnect.gov.au/entity/gosford-farm-home-for-boys/>