

# Shuna Red Cross Home

1925 – c. 1951

## Details

---

Shuna Red Cross Home was situated in Eastview Ave, Leura and was opened as a home for girls in 1925 by the Australian Red Cross. In either 1945 or 1946 the girls were moved to Kippilaw, also at Leura, while boys stayed at Shuna. Shuna closed in around 1951 and was later sold to the Church of England for youth activities.

Shuna was loaned to the Red Cross, rent free, by Dame Eadith Walker, a noted philanthropist and Red Cross executive member.

Shuna had the same aims as Juong at Faulconbridge. It was a home for children from tuberculosis-affected families, which were sometimes called Preventorium.

In either 1945 or 1946 the girls were moved to Kippilaw, also at Leura, while boys stayed at Shuna. Shuna closed in around 1951 and was then bought by the Church of England for youth activities.

The buildings that were Shuna Red Cross Home burnt down in the catastrophic Leura bushfires of 1957. Two houses have since been built on the site and one of these has been named Shuna.

## Gallery

---



### Panic Flight from Leura, Bushfires 1957

**Description:** This is a copy of the front page of *The Sun*, as part of a collection of photographs of the 1957 Leura, Wentworth Falls and Woodford fires.



### Matron Knowles Looks Over the Beds at Shuna

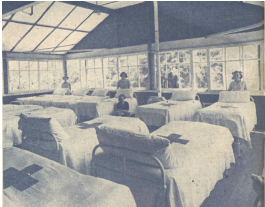
**Description:** This is an image of the Shuna Red Cross Home at Leura. It shows five girls making the beds on the sleeping verandah at Shuna, under the supervision of a matron. This image was published in *The Sun* on 13 July 1926, along with other images from Shuna and the Bodington Red Cross Hospital in the Blue Mountains. The caption was provided by *The Sun*.

---



### Shuna Red Cross Home, Leura

**Description:** This is a black and white image of Shuna Red Cross Home, Leura. It shows six girls standing on the path in the leading up to Shuna, and the house behind them. It was published in *The Sun* on 6 March 1927, along with other photos of the Shuna and Juong Red Cross Homes in the Blue Mountains.



### Verandah-dormitory, "Shuna", Leura, N.S.W.

**Description:** This is an image showing several girls standing next to their beds in the verandah-dormitory of Shuna Junior Red Cross Home. It was originally published in the March-April 1947 issue of the Australian Red Cross *Junior Magazine*.

## More info

### Related Entries

#### Run by

- [Australian Red Cross \(1914 - current\)](#)

#### Related Organisations

- [Kippilaw \(1945 - 1950\)](#)  
In 1945 or 1946 girls were moved from Shuna to Kippilaw.
- [Berida Junior Red Cross Home \(c. 1950 - 1974\)](#)  
When Shuna Red Cross Home closed the children were transferred to Berida Junior Red Cross Home.
- [Junior Red Cross Society \(1918 - 1995?\)](#)

### Resources

- [Junior Fun - "Cudgelo" Seaside Home - The House that the Children Built...](#), The Sydney Morning Herald, 25 January 1934
- [Red Cross gives girl holiday](#), The West Wyalong Advocate, 13 February 1950
- X, Jude, [Shuna](#), The Blue Mountain Echo, 30 October 1925

## Records

For more information and to access your records, follow the links below:

### Records

- [Records of Red Cross Children's Homes \(1918? - 1990s\)](#)

You can view this page online by visiting <https://www.findandconnect.gov.au/entity/shuna-red-cross-home/>