

Kippilaw

1945 – 1950

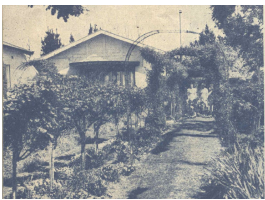
Details

Kippilaw, in Leura in the Blue Mountains, was established as a Junior Red Cross Home for girls in 1945. Kippilaw received girls from Juong Junior Red Cross Home and Shuna Red Cross Home in 1945 and 1946. Kippilaw closed in 1950 and the children were transferred to Berida.

Kippilaw was a Red Cross convalescent home before it closed in 1945 and became a Junior Red Cross Home. Juong Junior Red Cross Home was closed after Kippilaw was opened.

Blue Mountains historian Shirley Evans has told Find & Connect that little is known about this home, but that the property was once owned by Goldsbrough Mort.

Gallery



Garden view, "Kippilaw", Leura, N.S.W

Description: This is an image of Kippilaw Junior Red Cross Home, showing the garden and front of the house. A small group of children can be seen sitting on the ground at the end of the path, at the feet of three adults (presumably staff members). The image was originally published in the March-April 1947 issue of the Australian Red Cross *Junior* Magazine.

More info

Related Entries

Run by

- [Australian Red Cross \(1914 - current\)](#)

Related Organisations

- [Juong Red Cross Home \(1925 - 1945\)](#)
Children from Juong were transferred to Kippilaw in 1945.
- [Shuna Red Cross Home \(1925 - c. 1951\)](#)
In 1945 or 1946 girls were moved from Shuna to Kippilaw.
- [Berida Junior Red Cross Home \(c. 1950 - 1974\)](#)
When Kippilaw closed the children were transferred to Berida Junior Red Cross Home.
- [Junior Red Cross Society \(1918 - 1995?\)](#)

Resources

- [Red Cross gives girl holiday](#), The West Wyalong Advocate, 13 February 1950

Records

For more information and to access your records, follow the links below:

Records

- [Records of Red Cross Children's Homes \(1918? - 1990s\)](#)
-

You can view this page online by visiting <https://www.findandconnect.gov.au/entity/kippilaw/>