

Montrose Child Protection Centre

c. 1978 – c. 2009

Other Names:

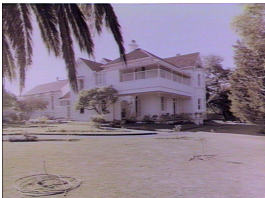
- Montrose
- Montrose Child Protection Unit
- Montrose CLPU

Details

Montrose Child Protection Centre, in Burwood, was established around 1978. Before it was converted by the Department of Youth and Community Services to a specialist child protection centre it had been the Montrose Infants' Home. From 1978 Montrose functioned as crisis accommodation and a hostel for children who needed protection from abuse. It also served as the administrative premises for Montrose Child Protection Unit. It had closed by 2009. In 2011 Montrose was a private residence.

Montrose Child Protection Centre was established in 'Montrose', a property which had been owned by the New South Wales Government since the 1920s, and which had served as a home for mothers and babies and an infants' home.

Gallery



Montrose Child Protection Unit Burwood



Montrose Child Protection Centre

Description: This is an image of a bedroom at Montrose Child Protection Centre taken in June 1979. Please note that the State Library of New South Wales collection includes more digitised images of Montrose Child Protection Centre taken by the Government Printing Office, including images of the exterior and interiors of the Child Protection Centre, staff, children and parents.



Social workers playing with State wards at Montrose C.L.P.U., Burwood

Description: This is a copy of an image in the State Library of New South Wales collection taken at Montrose Child Protection Centre on 26th of February 1980. Please note that the State Library of New South Wales collection includes more digitised images of Montrose Child Protection Centre taken by the Government Printing Office, including images of the exterior and interiors of the Child Protection Centre, staff, children and parents.



Social workers playing with State wards at Montrose C.L.P.U., Burwood

Description: This image shows children and social workers at Montrose Child Protection Centre. Please note that the State Library of New South Wales collection includes more digitised images of Montrose Child Protection Centre taken by the Government Printing Office, including images of the exterior and interiors of the Child Protection Centre, staff, children and parents.

More info

Chronology

- Montrose Maternity Hospital (c. 1920 - c. 1935)
 - Montrose Hostel (1936 - c. 1949)
 - Montrose Infants' Home (c. 1949 - c. 1978)
- **Montrose Child Protection Centre (c. 1978 – c. 2009)**

Related Entries

Run by

- [Department of Youth and Community Services, State Government of New South Wales \(1976 - 1988\)](#)
- [Department of Health and Community Services, State Government of New South Wales \(1991 - 1992\)](#)
- [Department of Community Services, State Government of New South Wales \(1992 - 2009\)](#)
- [Department of Family and Community Services, State Government of New South Wales \(1988 - 1991\)](#)

Records

For more information and to access your records, follow the links below:

Records

- [Departmental Records relating to State Wards, New South Wales \(1918 - current\)](#)
-

You can view this page online by visiting <https://www.findandconnect.gov.au/entity/montrose-child-protection-centre-2/>