

# Montrose Hostel

1936 – c. 1949

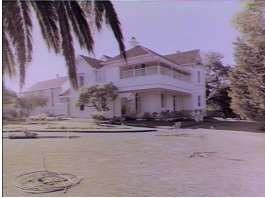
## Details

---

Montrose Hostel, at Burwood, was established in the mid 1930s, in what had been Montrose Maternity Home. Run by the Child Welfare Department, it was a hostel for girls who were state wards. In 1949 Montrose changed its use to become Montrose Infants' Home.

## Gallery

---



**Montrose Child Protection Unit Burwood**



**Montrose Child Protection Centre**

**Description:** This is an image of a bedroom at Montrose Child Protection Centre taken in June 1979. Please note that the State Library of New South Wales collection includes more digitised images of Montrose Child Protection Centre taken by the Government Printing Office, including images of the exterior and interiors of the Child Protection Centre, staff, children and parents.



**Montrose Maternity Hospital, Burwood**

## More info

---

### Chronology

- Montrose Maternity Hospital (c. 1920 - c. 1935)
  - **Montrose Hostel (1936 – c. 1949)**
    - Montrose Infants' Home (c. 1949 - c. 1978)
      - Montrose Child Protection Centre (c. 1978 - c. 2009)

## Related Entries

### Run by

- [Child Welfare Department, State Government of New South Wales \(1923 - 1970\)](#)

## Records

---

For more information and to access your records, follow the links below:

### Records

- [Departmental Records relating to State Wards, New South Wales \(1918 - current\)](#)
- 

You can view this page online by visiting <https://www.findandconnect.gov.au/entity/montrose-hostel/>