

St Mary's Home, Toowong

1919 – 1991

Other Names:

- St Mary's Church of England Nursing Home
- St Mary's Home and Refuge
- St Mary's Church of England Home, Toowong

Details

St Mary's Home, Toowong, was established in 1919. It was a Home for unmarried mothers and their babies operated by the Committee of St Mary's Church of England Home. St Mary's Home, Taringa amalgamated with the Brisbane Female Refuge and relocated to Bent Street, Toowong in 1919. It operated under the name St Mary's Home, Toowong. The Home closed in 1991.

St Mary's Home, Toowong was licensed under *The Infant Life Protection Act* until 1959. It was licensed again on 11 February 1975. Funding ceased in 1981/82 but the home continued to operate.

According to an article published in *The Courier-Mail* in 1944, St Mary's Home, Toowong, women typically stayed at St Mary's Home for approximately four months after giving birth. The majority of the women who stayed at St Mary's were between the ages of 17 and 19. Most of the babies born to women at the home were put up for adoption.

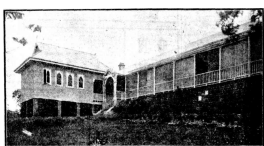
Beatrice Wood was in charge of St Mary's Home, Taringa, in 1907. Miss E. Taylor was matron of St Mary's Home Toowong from 1924 to 1944. Ivy McGregor was matron of St Mary's Home Toowong in 1951 and 1952.

Reverend Canon Campbell was Chaplain to the St Mary's Home and Refuge, Toowong, in 1929.

St Mary's Home, Toowong, was mentioned in the *Commonwealth Contribution to Former Forced Adoption Policies and Practices* Report (2012) as an institution that was involved in forced adoption.

One woman sent to St Mary's in 1967 told her story in a submission to the Senate inquiry. She wrote: "Unmarried Mothers Home served a purpose, they isolated us from family or friends who otherwise might have encouraged us to keep our babies and they instilled a feeling of shame, secrecy and powerlessness in us and conditioned us to relinquish our babies, as we were deprived of any information that would have enabled us to keep our babies and weren't aware of any other option" (submission no 18).

Gallery



St Mary's Church of England Home at Toowong

Description: This is a copy of a photograph of St Mary's Church of England Home at Toowong that was published in the Brisbane Telegraph in 1924.



St Mary's Church of England Home

Description: This is a copy of an image of St Mary's Home, Toowong that was published in the Daily Examiner in 2018.

More info

Chronology

- Church of England Rescue Home (21 September 1894 - 1898)
 - St Mary's Home (1898 - 1919)
- **St Mary's Home, Toowong (1919 – 1991)**

Related Entries

Run by

- [The Committee of St Mary's Church of England Home \(1907 - 1991\)](#)

Related Events

- [Inquiry into Commonwealth Contribution to Former Forced Adoption Policies and Practices, Commonwealth of Australia \(2011 - 2012\)](#)
St Mary's Home, Toowong, was mentioned in submissions 18, 79, 92 and 368 to the Senate inquiry

Related Organisations

- [Female Refuge and Infants Home \(1870 - 1919\)](#)
- [Sandeman Nursery \(1897 - 1898\)](#)

Babies born at St Mary's Home were sent to Sandeman Nursery while awaiting adoption.

Resources

- Senate Community Affairs References Committee, [Commonwealth Contribution to Former Forced Adoption Policies and Practices](#), 29 February 2012
- Council of Social Service of Queensland, *Social Services Queensland*, 1968
- [An Anniversary and an Appeal](#), Queenslander, 29 May 1920
- [St Mary's Home, Toowong: Appeal For the Little Mothers](#), Courier Mail, 20 December 1921
- [St Mary's Home and Refuge](#), Brisbane Courier, 28 November 1929
- Goode, Joy, [Submission no 241 to the Senate Inquiry into Commonwealth Contribution to Former Forced Adoption Policies and Practices](#), 29 March 2011

Records

For more information and to access your records, follow the links below:

Records

- [Adoption Records](#)
- [St Mary's Home, Toowong, Records \(1899 - 1991\)](#)

- [Johnston, John, Historian, News clippings and photographs - Children's Homes \(c. 1840 - c. 1990\)](#)
 - [Records created by Anglicare and its affiliated agencies \(1992 - current\)](#)
 - [SOWES229 Social Welfare Department Records, Anglican Church, Children's Homes records \(1899 - 1992\)](#)
 - [Correspondence - Alphanumeric Prefix - Aboriginal and Torres Strait Islander Affairs \(1909 - 1992\)](#)
 - [Correspondence files, single number series with 'B' \[Child Endowment\] prefix \(1904 - 1974\)](#)
-

You can view this page online by visiting <https://www.findandconnect.gov.au/entity/st-marys-home-toowong/>