

# Bethesda Mothers' Hospital

1938 – 1968

**Other Names:** • Bethesda

## Details

---

The Bethesda Mothers' Hospital, in Rockhampton, was run by the Salvation Army. It functioned as a maternity hospital and a rescue home for girls. Before 1938, it was known as the Glenties Mothers' Hospital. In 1968, it was again renamed Bethesda Hospital and Hostel.

An article in Rockhampton's *Morning Bulletin* on 2 July 1938 stated that the Bethesda Mothers' Hospital would operate in two distinct areas of work, both to be managed by the Salvation Army.

One section would function as a private maternity hospital where, for a small fee, married women would be cared for by a qualified Salvation Army nurse. The proceeds of this ward helped fund the operation of the "charitable wards" (NAA A885 B96, 1941).

The other section would operate as a girls' home. The article in the *Morning Bulletin* went on to state that:

*"destitute, wronged, and neglected girls are cared for and little unwanted babes are given a home, until such time as adoption can be arranged.*

*There will be a new nursery with a large veranda on three sides, with miniature dining room, furniture for the toddlers, new bathrooms, and locker rooms. Individual lockers and wardrobes are provided for, and fly-proof rooms for the preparation of the babies' food."*

Bethesda Mothers' Hospital was described similarly in its application for approval as an institution to receive Child Endowment payments. It described the girls' section in slightly different terms, as a home "for sub-normal girls and an industrial home for uncontrollable girls and girls taken from the street" (NAA A885 B96, 1941). It also stated that "foster babies" at the home were generally the children of unmarried mothers who had stayed in the maternity hospital. At this time there were 12 babies living at the home.

## Gallery

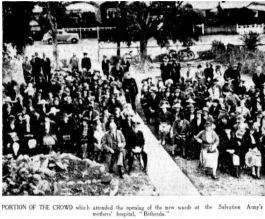
---



### New Wing, Salvation Army Mother's Hospital

**Description:** The image included the caption: New wing of the Salvation Army's Mothers' Hospital in Talford Street, which will be officially opened at 2:30 this afternoon by Mrs Lieutenant-Commissioner W. Dalziel, wife of the Territorial Commander for Eastern Australia, which comprises New South Wales and Queensland. The hospital will in future be known as Bethesda instead of Glenties.

---



Portion of the crowd which attended the opening of the new wards at the Salvation Army's mothers' hospital, "Bethesda."



[Official opening by Mrs Dalziel]

**Description:** This image included the caption: Mrs Lieut-Commissioner Dalziel (with bouquet), performed the opening ceremony of the private hospital, with M/ Hopper, Sister M. Bell, and Major J. Brandon, State Women's Social Secretary (right).



[Bethesda Mothers' Hospital opening]

**Description:** This image included the caption: Ald. J. J. Jeffries, in the absence of the Mayor (Mr R. W. Evans), who represented the Rockhampton City Council at the opening of the Salvation Army's new wards on Saturday.



Salvation Army Mothers' Home Rockhampton

**Description:** The image included the caption: Section of the Salvation Army's Mothers' Home known for some years as Glenties.

## More info

### Chronology

- Glenties Rescue Home (1902 - 1924)
  - Glenties Mothers' Hospital (1924 - 1938)
- **Bethesda Mothers' Hospital (1938 – 1968)**
  - Bethesda Hospital and Hostel (1968 - 1970)
    - Bethesda Hostel (1970 - 1976)
      - Bethesda Hostel and Children's Home (1976 - 1977)
      - Bethesda Children's Home (1977 - September 1979)

### Related Entries

#### Run by

- [The Salvation Army Australia Eastern Territory \(1921 - 2018\)](#)

### Resources

- The Salvation Army Australia Eastern Territory, [Submission No. 46 to the Senate Inquiry into Children in Institutional Care: The Salvation Army Australia Southern Territorial Headquarters \(VIC\), Appendix B, Eastern Territory Social Centres, A list of openings, closings and function](#), June 2003
- Council of Social Service of Queensland, *Social Services Queensland*, 1968
- Cleland, Sharon, [Caring for the Children: A history of institutional care provided by The Salvation Army for Australian children and youth \(1893-1995\)](#), August 2012

# Records

---

For more information and to access your records, follow the links below:

## Records

- [Salvation Army Australia, Records of Homes in the former Eastern Territory \(c. 1891 - 1990s\)](#)
  - [Correspondence files, single number series with 'B' \[Child Endowment\] prefix \(1904 - 1974\)](#)
- 

You can view this page online by visiting <https://www.findandconnect.gov.au/entity/bethesda-mothers-hospital/>