

Swan Reach Mission

1926 – 1946

Details

The Swan Reach Mission was established by the United Aborigines Mission [UAM] at Swan Reach in 1926. A rented cottage was used as the Mission House and a school opened at the Mission in early 1926 to provide Christian education to local Aboriginal children. The site at Swan Reach was prone to flooding and permanent structures could not be sustained. Issues with sanitation and the health of the residents plagued the Mission. The Swan Reach Mission was closed in 1946 when the UAM opened the Gerard Mission near Loxton and the Swan Reach residents were transferred to the new Mission.

National Redress Scheme for people who have experienced institutional child sexual abuse

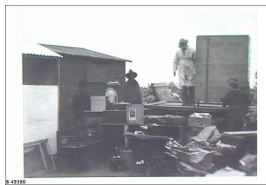
In 2021, the South Australian government has agreed to be a funder of last resort for this institution. This means that although the institution is now defunct, it is participating in the National Redress Scheme, and the government has agreed to pay the institution's share of costs of providing redress to a person (as long as the government is found to be equally responsible for the abuse a person experienced).

Gallery



Mission, Swan Reach

Description: The library description states: Children in a classroom at the mission, Swan Reach.



Mission, Swan Reach

Description: The library description states: Packing up to move to Gerard.

More info

Chronology

- **Swan Reach Mission (1926 – 1946)**
 - Gerard Mission (1946 - 1974)

Related Entries

Run by

- [United Aborigines Mission \(1929 - 2020\)](#)

Related Organisations

- [Manunka Mission \(1901 - 1916\)](#)

Many of the Aboriginal people who came to the Swan Reach Mission had previously lived at the Manunka Mission.

Related Concepts

- [Stolen Generations](#)

Resources

- United Aborigines Mission, [The United Aborigines messenger](#), 1929 - 1987

Records

Records

- [Records of the Aborigines' Office and Successor Agencies \(1866? - 1971?\)](#)
 - [Records of Aboriginal Missions in South Australia \(1850s - 1970s\)](#)
-

You can view this page online by visiting <https://www.findandconnect.gov.au/entity/swan-reach-mission/>