

St Giles' School

1931 – 1985?

Details

St Giles School, run by the Society for the Care of Crippled Children, opened in 1931. The School provided an education to the children with physical disabilities who lived at St Giles Home or attended it for treatment. Children did not live at the School. In the 1980s, the Education Department took the School over and it became Newstead Heights School.

St Giles' School began as classes in the Launceston General Hospital in 1931. In 1941, a ward at St Giles' Home was taken over for teaching. A special classroom was built in 1943 and it became known as the St Giles' Hospital Class. In 1959, the class became St Giles' School. It catered for children with physical disabilities aged between three and 18.

The St Giles' Parents and Friends Association and the Society for the Care of Crippled Children's Association provided monetary and practical support to St Giles' School.

By the early 1980s, the School needed modernising. The Education Department took it over, erected a new building on the site, and renamed it Newstead Heights School. In 2013, it remains a special School.

Gallery



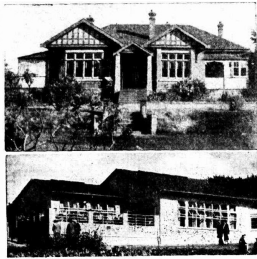
St. Giles' School, Launceston, Speech Pathology



St. Giles' School, Launceston, Speech Pathology



St. Giles' School, Launceston, Speech Pathology



The top picture shows the St. Giles' Home for Crippled Children at Amy-road, and the lower is that of the new school (opened this year) attached to the home.
—Burrows Photo.

St Giles' Home and new school

Description: These two photographs were published in an article in the *Examiner* newspaper on 14 July 1944 titled 'Care of Crippled Children'. The caption published with the images reads 'The top picture shows the St. Giles' Home for Crippled Children at Amy-road, and the lower is that of the new school (opened this year) attached to the home'.

More info

Related Entries

Related Organisations

- [St Giles' Home \(1937 - c. 1995\)](#)
St Giles' School was on the site of St Giles' Home for Crippled Children.
- [Tasmanian Society for the Care of Crippled Children \(1935 - 1988\)](#)
The Launceston branch of the Tasmanian Society for the Care of Crippled Children assisted St Giles' School.
- [Society for the Care of Crippled Children \(1937 - 1988\)](#)
The Society for the Care of Crippled Children supported St Giles' School.

Resources

- Paterson, Jai, *70 years of Tasmania's St Giles, 1937-2007*, 2007
- Green, Anne, *Billycarts & wheelchairs : 75 years of St Giles*, 2013

Records

Records

- [General Correspondence \[3\] \(1842 - 2002\)](#)
- [Record Books, St Giles' School \(1950 - 1978\)](#)

You can view this page online by visiting <https://www.findandconnect.gov.au/entity/st-giles-school/>