

Hillston, Stoneville

1969 – 1984

Other Names:

- Stoneville Boys' Home
- Hillston
- Stoneville

Details

Hillston, Stoneville, was a government-run 'open' reformatory for adolescent boys on a working farm property. It continued the Hillston, Anglican Farm School, Stoneville. Hillston, Stoneville closed in 1984.

Government reports (*Signposts*, 2004 pp.238-243) show that in 1969 boys from 12 years old were regularly admitted to Hillston. It was a large institution, and during the 1970s there were never less than 200 admissions each year, peaking at 363 admissions in 1976. Each year in June, there was a head count of boys at Hillston. In 1970, there were 68 boys; there were 81 boys in 1974; and in 1976 there were 69 boys.

All the boys who were sent to Hillston were wards of the State. Boys went to school and worked at Hillston, and could be sent to the government-run Warramia Group Home at Badgingarra. The boys could also be given 'work release'. From 1970, younger boys were reportedly placed in a separate cottage, with cottage parents, in the grounds of Hillston. A dairy and swimming pool were also installed in that year.

In 1972, the annual report of the Child Welfare Department (*Signposts*, p.239) showed that there had been a 'marked increase' in admissions of boys to Hillston partly due to the 'non-payment of fines'. In 1973, boys and staff were reported (p.240) as building a new 'workshop complex'. Between 1974 and 1975 there was a 40 percent increase in admissions to Hillston, which was attributed to increasing admissions of Aboriginal boys.

Work release and trial leave were common at Hillston during the 1970s and the annual reports of the Department for Community Welfare during these years (*Signposts*, pp.240-241) relate the difficulties of placing boys with suitable employers, particularly with downturns in the nearby Woorooloo abattoir, where many of the boys were sent for work experience. By 1977, admission numbers were easing as boys who were 'fine-defaulters' were no longer sent to Hillston.

There had always been educational facilities at Hillston, and by 1976 the onsite school had three teachers. A science building opened in 1977.

By 1980, boys from 11 to 17 years were admitted, with the average age reported as 15 years. In 1983, Hillston's last full year, there were 187 admissions and 198 discharges, including 83 boys who were admitted more than once during that year.

In 1982 the Inquiry into the Treatment of Juvenile Offenders issued its report, also known as the Edwards Report. An inquiry by Professor Eric Edwards found that Western Australia had the highest per capita rates of youth incarceration in the nation. Edwards recommended two key principles that the Department needed to address: 'Offenders and non-offenders should be clearly and completely separated and dealt with separately' and the 'Children's Court (and not the Department) should determine whether children found guilty of offences should be detained in custody'. The recommendations of this inquiry led to the closure of Hillston as had flow-on effects to

other institutions in Western Australia.

As a result of recommendations from the 1982 Inquiry into the Treatment of Juvenile Offenders, Hillston ceased to be a residential facility and it closed in January 1984.

Gallery



Hillston, horse

Description: 'Hillston, horse' is a digital copy of an image included (p.48) in the *Annual Report 1974* of the Department for Community Welfare. The caption reads, 'Facilities at Hillston provide for training in rural as well as urban occupations'.



Hillston, milking

Description: 'Hillston, milking' is a digital copy of an image included (p.50) in the *Annual Report 1975* of the Department for Community Welfare. The caption reads, 'Training is designed to develop potential skills, which will help in returning to employment in the community with an attitude of responsibility and self-confidence'.



Hillston, courtyard

Description: 'Hillston, courtyard' is a digital copy of an image included (p.49) in the *Annual Report 1975* of the Department for Community Welfare.



Hillston, construction

Description: 'Hillston, construction' is a digital copy of an image included (p.45) in the *Annual Report 1976* of the Department for Community Welfare. The caption reads, 'Participating in construction programme at Hillston'.



Breeding pigs, Hillston

Description: 'Breeding pigs, Hillston' is a digital copy of an image included (p.55) in the *Annual Report 1979* of the Department for Community Welfare.



Boys feeding cows, Hillston

Description: 'Boys feeding cows, Hillston' is a digital copy of an image included (p.55) in the *Annual Report 1979* of the Department for Community Welfare.



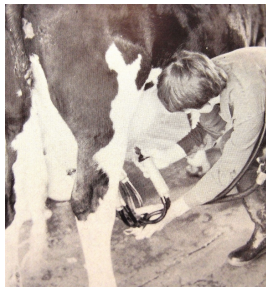
[Hillston, manual arts]

Description: 'Hillston, manual arts' is a copy of an image included (p.40) in the *Annual Report 1979-80* of the Department for Community Welfare. The caption reads, 'Boys learning manual arts - Hillston'.



[Learning manual arts at Hillston]

Description: 'Learning manual arts at Hillston' is a copy of an image included (p.40) in the *Annual Report 1979-80* of the Department for Community Welfare. The caption reads, 'Boys learning manual arts - Hillston'.



Hillston, milking time

Description: 'Hillston, milking time' is a digital copy of an image included (p.41) in the *Annual Report 1979-80* of the Department for Community Welfare. The caption reads, 'Milking time - boys at Hillston are also taught farming skills'.

More info

Chronology

- Anglican Farm School, Stoneville (1955 - 1961)
 - Hillston, Anglican Farm School, Stoneville (1962 - 1969)
- **Hillston, Stoneville (1969 – 1984)**

Related Entries

Ran

- [Hillston Point Walter Annexe \(1958? - 1984?\)](#)
The Point Walter annexe was part of Hillston.

Run by

- [Child Welfare Department, State of Western Australia \(22 December 1927 - 15 June 1972\)](#)
Date: 1969 - 1972
- [Department for Community Welfare, State of Western Australia \(1972 - 1985\)](#)
Date: 1972 - 1984

Related Organisations

- [Darlington Cottage \(1977 - 1983\)](#)
Darlington Cottage was an 'annexe' of Hillston.
Date: 1977 - 1983
- [McDonald House \(1952 - 1985?\)](#)
McDonald House became an 'annexe' of Hillston.
Date: 1970s - 1983
- [Warramia Group Home \(1972 - 2004?\)](#)
Boys from Hillston were sent to work at Warramia from 1972 and from around 1974 to 1982, Warramia was an annexe of Hillston.
Date: 1972 - 1982

Resources

- Western Australia. Department for Community Welfare, [Annual Report: Department for Community Welfare](#), 1973 - 1984
- Edwards, Eric James, *The treatment of juvenile offenders : a study of the treatment of juvenile offenders in Western Australia as part of an overall review of the Child Welfare Act*, 1982
- Department for Community Development, State of Western Australia, [Submission No 55 to the Senate Inquiry into Children in Institutional Care](#), July 2003

Records

For more information and to access your records, follow the links below:

Records

- [Anglican Diocese of Perth, Western Australia, Records \(1880s - 2010\)](#)
 - [Files - Community Welfare \("A" Series\), State Records Office of Western Australia \(25 August 1908 - 23 December 1990\)](#)
 - [Files - Child Welfare, State Records Office of Western Australia \(1 January 1917 - 16 June 1972\)](#)
-

You can view this page online by visiting <https://www.findandconnect.gov.au/entity/hillston-stoneville/>