

Kalumburu Mission

1931 – 1982

Other Names:

- Drysdale River Mission
- Kalumburu

URL: <http://www.kalumburumission.org.au>

Details

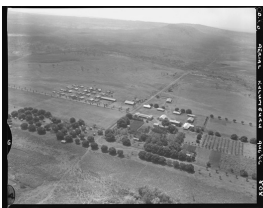
Kalumburu Mission (also known as Drysdale River Mission until around 1950) provided dormitory style residential care for Aboriginal boys and girls aged from infancy to around 16 years of age. Kalumburu began as an 'outstation' of the Drysdale River Mission in 1932 and became the main 'Mission Station' in 1937. Kalumburu Mission was managed by the Benedictine Community of New Norcia until it was handed over to the Catholic Diocese of Broome in 1981, and ceased to house children in 1982.

Kalumburu Mission (1931-1982) and Drysdale River Mission (1908 – 1937) were both managed by the Benedictine Community on different, but nearby sites. By 1937, Kalumburu Mission took over from Drysdale River Mission as the main site, and was referred to as Drysdale River Mission in government reports until 1951.

On 27 September, 1943, six people were killed during a Japanese air raid on the Kalumburu Mission during World War Two, including a mother and four children and the manager of the mission.

Kalumburu Mission ceased its role in out of home care in 1982 when it became a parish of the Catholic Diocese of Broome. In 2014 it continues as an historical and tourist site.

Gallery



Aerial view of Kalumburu Mission



Kalumburu Mission



Kalumburu Mission, c1980

Description: This is a digitised copy of a transparency and is part of the group of four images titled 'Kalumburu Mission buildings [picture]' held at the State Library of Western Australia. This images shows the driveway, grounds and some buildings at Kalumburu Mission.

More info

Related Entries

Run by

- [Benedictines, New Norcia \(c. 1846 - current\)](#)
Date: 1931 - 1981
- [Catholic Diocese of Broome \(1897? - current\)](#)
Date: 1981 - 1982

Related Organisations

- [Drysdale River Mission \(1908 - 1937\)](#)
The Drysdale River Mission and Kalumburu Mission were on different, but nearby sites. By 1937, Kalumburu Mission took over as the main site, and continued to be known as 'Drysdale River' in government reports until 1951.

Resources

- Human Rights and Equal Opportunity Commission, [Bringing Them Home: Report of the National Inquiry into the Separation of Aboriginal and Torres Strait Islander Children from their Families](#), 1997
- Information Services, Department for Community Development, [Signposts: A Guide for Children and Young People in Care in WA from 1920](#), 2004. *Relevance:* Kalumburu
- Australian Catholic Social Welfare Commission and the Australian Conference of Leaders of Religious Institutes, *A piece of the story : national directory of records of Catholic organisations caring for children separated from families*, November 1999. *Relevance:* p.131

Records

For more information and to access your records, follow the links below:

Records

- [Department of Aboriginal Affairs \[predecessors\], Records \(1886 - 2004\)](#)
- [New Norcia Archives \(1846 - current\)](#)
- [Files - Departmental \[Education Department\] \(1 January 1885 - 31 December 2000\)](#)
- [Files - General \[Health Department\] \(1899 - 1987\)](#)
- [Administration Files - Northern District Office \[N.D.G Sequence\] \(1950 - 1974\)](#)
- [Files - Community Welfare \("A" Series\), State Records Office of Western Australia \(25 August 1908 - 23 December 1990\)](#)
- [Files - Aborigines Departments \(1 January 1926 - 16 June 1972\)](#)

You can view this page online by visiting <https://www.findandconnect.gov.au/entity/kalumburu-mission/>