

# Wanslea Hostel

1943 – 1946

## Details

---

Wanslea Hostel was established in North Perth (Mt Lawley) in 1943 by the Women's Australian National Service (WANS) for young children who could not live at home due to parental sickness or war-related absence. It closed in 1946 and was replaced by a larger children's Home, Wanslea (Cottesloe), in January 1947.

Wanslea Hostel was established in North Perth (Mt Lawley) in 1943 by the Women's Australian National Service (WANS) for 'the children of sick mothers who were wives of servicemen'.

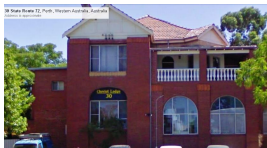
The hostel was at 30 Bulwer Street, in a building which had previously been the Lister Private Hospital and Nurse Harvey's Maternity Hospital. Renovations were undertaken, including repainting in pastel shades, and the construction of children's hot and cold showers, playground and child-size beds.

When the hostel was officially opened on 8 November 1943, 30 children were living there and by December 1943, there were 87 children in residence, 53 being children of servicemen.

It closed in 1946 and was replaced by a larger children's Home, Wanslea (Cottesloe), in January 1947.

## Gallery

---



**Wanslea Hostel**

**Description:** 'Wanslea Hostel (1943-1946) 30 Bulwer Street, in 2013' is a copy of a digital image from Google Street View, showing 30 Bulwer Street, the site of the former Wanslea Hostel (1943-1946).



**Group of children at Wanslea**

**Description:** 'Group of children at Wanslea' is a digital copy from a collection of photocopies of images held by the State Library of Western Australia in its collection, 'Photographs relating to Florence Hummerston and her work [picture]'. The caption is dated 1944. However, it is unknown whether this image comes from the Wanslea Hostel at 30 Bulwer Street (1943-1946) or the Wanslea Children's Home at Cottesloe (1947-1984). The child-size furniture is a feature of this image.

---



## Children running 3-legged race, Wanslea

**Description:** 'Children running 3-legged race, Wanslea' is a digital copy from a collection of photocopies of images held by the State Library of Western Australia in its collection, 'Photographs relating to Florence Hummerston and her work [picture]'. The caption does not give a date, but it is adjacent to other images from the 1940s. It is unknown whether this image comes from the Wanslea Hostel at 30 Bulwer Street (1943-1946) or the Wanslea Children's Home at Cottesloe (1947-1984).

---

## More info

---

### Chronology

- **Wanslea Hostel (1943 – 1946)**
  - Wanslea (1947 - 1984)

### Related Entries

#### Run by

- [Women's Australian National Service \(WANS\) \(1941 - 1946\)](#)  
Date: 1943 - 1946

#### Related Organisations

- [Child Welfare Department, State of Western Australia \(22 December 1927 - 15 June 1972\)](#)  
The Child Welfare Department may have asked that some children were placed at the Wanslea Hostel.

## Records

---

For more information and to access your records, follow the links below:

### Records

- [Wanslea Family Services Records, Wanslea Family Services \(1940s - 2004\)](#)
  - [Photographs relating to Florence Hummerston and her work \[picture\] \(1939 - 1968\)](#)
  - [Correspondence files, single number series with 'B' \[Child Endowment\] prefix \(1904 - 1974\)](#)
- 

You can view this page online by visiting <https://www.findandconnect.gov.au/entity/wanslea-hostel-2/>