

Church of England Home for Girls

1904 – 1929

Other Names: • Avona

Details

The Church of England Home for Girls, also known as Avona, was opened in 1904 at Glebe, on a site next to the [Church Rescue Home \(Strathmore\)](#). It had capacity for approximately 60 girls. Avona was opened to provide an alternative to housing young girls with older women at Strathmore, as the committee running the homes believed that the women would have a negative influence on the girls. Initially Avona took girls aged 3-16 years old, however from 1909 girls from the age of 14 were sent to the neighbouring [Tress-Manning Home](#).

In 1907 the annual meeting of the Church of England Homes committee reported that 65 girls had been admitted to Avona over the previous 12 months. The committee stated that the Home took “destitute” children. Many of these children came from the Children’s Court, but the Home also “searched out” deserted wives in the metropolitan area in order to take their children into Avona (‘Church Rescue Home’, *The Daily Telegraph*, 19 September 1907).

Girls at Avona did school work in the morning, in the afternoons were taught lace-work, clothes making and mending, chair-caning, wood carving, and singing, and were also expected to do all of the housework. The items that the girls produced, particularly the lace-work pieces, were sold to help finance the home. The sales brought in a significant amount of money, however the primary source of income for all of the Church of England Homes at Glebe came from the laundry work done by the women at Strathmore. Other fundraising efforts such as fetes, dances and concerts, annual subscriptions, and donation appeals also helped finance the Homes.

In 1917 a young boy called Wally was admitted to Avona, alongside his three sisters. He was the only boy to be admitted to the Home, and was transferred to the Church of England Boys Home when it opened in 1918.

In 1928 the Church of England Homes committee opened a new Girls’ Home at Carlingford. This new site allowed for an increase in the number of children admitted to the homes, as well as what was seen as a healthier environment in the country, compared to the city location of Glebe. From 1928 the girls were transferred from Avona, Strathmore, and Tress Manning to the new Girls’ Home. Avona closed in 1929, when the last of the girls were transferred to Carlingford.

Gallery



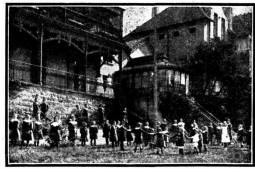
Avona - View of East Front

Description: This is a sketch showing the front of 'Avona', the building which was later purchased by the Church of England for use as a girls' home. The sketch shows a large two-storey building with ornate dormer windows, large front verandahs, and a glass conservatory at one side. The building sits above large decorative gardens. This sketch part of material advertising the sale of the Avona estate in 1899.



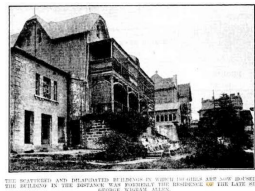
Avona - Glebe

Description: This is a photograph of the Church of England Home For Girls at Glebe, also known as Avona. It shows approximately 25 girls standing on the lawn in front of a large two-storey house with ornate front verandahs, decorative dormer windows, and a glass conservatory on the side. The girls are all wearing white dresses with dark sleeves. A woman (presumably a staff member) can be seen standing on the lower verandah of the building, overlooking the girls.



Playground of the Church of England Avona Home, Forsyth Street, Glebe Point

Description: This is a photograph of girls at the Church of England Home for Girls, Avona, at Glebe. It shows approximately 40 girls standing on a lawn in front of Avona, which is a large stone building with wrought-iron verandahs. Some of the girls are holding hands and standing in a circle, while others face the camera straight-on. Most of the girls are wearing dark dresses with large white collars, though a few of them are wearing white aprons. Two women in white aprons (presumably staff members) can be seen on the lower verandah of Avona, which is raised up several metres from the lawn. To the side of Avona there is a glass conservatory or green-house, and in the background the Girls Training Home 'Tress-Manning' can be seen.



C. of E. Girls' Homes at Glebe Point, for the transfer of which to Carlingford an appeal has been launched.

Description: This image shows buildings of the Church of England Girls' Homes in Glebe. The building in the foreground is Avona, then Tress-Manning behind it, and Strathmore in the background. Girls from the Home can be seen sitting on the steps outside of Avona. Avona and its grounds later became the Charlton Memorial Home. This image was published in The Sydney Morning Herald on 11 May 1928. The description reads: "The scattered and dilapidated buildings in which 150 girls are now housed. The building in the distance was formerly the residence of the late Sir George Wigram Allen."

More info

Chronology

- **Church of England Home for Girls (1904 – 1929)**
 - Church of England Girls' Home, Carlingford (1928 - 1977)

Related Entries

Run by

- [Church of England Homes \(c. 1884 - 1984\)](#)

Related Organisations

- [Church of England Training Home for Girls \(1909 - 1929\)](#)
Church of England Home for Girls (Avona) was located on the same site as the Church of England Training Home for Girls (Tress-Manning)
- [Church Rescue Home \(1885 - 1923\)](#)
Church of England Home for Girls (Avona) was located on the same site as the Church Rescue Home (Strathmore). The first girls at Avona were transferred there from Strathmore.

- [Strathmore Girls' Home \(1923 - 1929\)](#)

Strathmore Girls' Home and Avona Church of England Home for Girls were on the same site at Glebe.

- [Arden Girls' Home \(1919 - 1929\)](#)

Arden Girls' Home was located across the street from the Church of England Home for Girls (Avona)

Resources

- Epacris, [Little Lace Workers](#), The Daily Telegraph, 12 September 1908
- [Christmas Appeals Church of England Homes Glebe](#), The Sydney Morning Herald, 10 December 1925

You can view this page online by visiting <https://www.findandconnect.gov.au/entity/church-of-england-home-for-girls/>