

Strathmore Girls' Home

1923 – 1929

Details

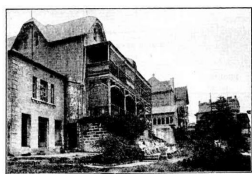
Strathmore Girls' Home was opened on 8th February 1923 by the Church of England Homes at Glebe in a building that had previously been used as the [Church Rescue Home](#) for women. Strathmore was on the same site as the [Avona Girls' Home](#) and the [Tress Manning Girl's Training Home](#). Strathmore had capacity for 50 girls. It was opened due to an increasing number of applications for girls to be admitted to Avona, which was at capacity. A notice published in *The Sydney Morning Herald* ('Anglican Homes', 8 February 1922) stated that many of the girls who were to be placed at the new home were the "orphans" of soldiers.

Girls at Strathmore, like girls at the other Church of England Homes at Glebe, did school work in the morning, in the afternoons were taught lace-work, clothes making and mending, chair-caning, wood carving, and singing, and were also expected to do all of the housework. The items that the girls produced, particularly the lace-work pieces, were sold to help finance the Homes. Other fundraising efforts such as fetes, dances and concerts, annual subscriptions, and donation appeals provided the remainder of the funds for the Homes.

In June 1924 some of these lace items created by the girls at the Glebe Homes- two tray cloths and two handkerchiefs – were sent to Queen Mary, who had stayed at Strathmore during a trip to Australia several decades earlier. Later that same year a sale was held at the Homes where 500 handkerchiefs made by the girls, including some in the style of those sent to Queen Mary, were displayed and sold.

In 1928 the Church of England Homes committee opened a new Girls' Home at Carlingford. This new site allowed for an increase in the number of children admitted to the homes, as well as what was seen as a healthier environment in the country, compared to the city location of Glebe. From 1928 the girls were transferred from Strathmore, Avona, and Tress Manning to the new Girls' Home. Strathmore closed in 1929, when the last of the girls were transferred to Carlingford.

Gallery



C. of E. Girls' Homes at Glebe Point, for the transfer of which to Carlingford an appeal has been launched.

Description: This image shows buildings of the Church of England Girls' Homes in Glebe. The building in the foreground is Avona, then Tress-Manning behind it, and Strathmore in the background. Girls from the Home can be seen sitting on the steps outside of Avona. Avona and its grounds later became the Charlton Memorial Home. This image was published in *The Sydney Morning Herald* on 11 May 1928. The description reads: "The scattered and dilapidated buildings in which 150 girls are now housed. The building in the distance was formerly the residence of the late Sir George Wigram Allen."



Strathmore - Glebe

Description: This is a photo of the Church Rescue Home at Glebe, also known as Strathmore. It shows a grand three-storey stone building situated on a slight hill.



Strathmore facing Glebe Point Road, with third storey

Description: This is a photograph of the building known as Strathmore at Glebe. It shows a large three-storey stone building with a small front portico in the middle of a lower-storey verandah. The sides of the verandah appear to have been partially enclosed, potentially for use as additional rooms. Strathmore was bought by the Church of England in 1899 for use as a women's rescue home, then as a girl's home. In the 1930s, when this photograph was taken, Strathmore was used as accommodation for homeless families.



Strathmore Glebe Point

Description: This is sketch of Strathmore at Glebe. It shows a grand three-storey stone building on top of a small hill. The first two floors of the building have verandahs, and the third is slightly smaller with large windows overlooking the grounds of the Strathmore estate.

More info

Chronology

- **Strathmore Girls' Home (1923 – 1929)**
 - Church of England Girls' Home, Carlingford (1928 - 1977)

Related Entries

Run by

- [Church of England Homes \(c. 1884 - 1984\)](#)

Related Organisations

- [Church of England Home for Girls \(1904 - 1929\)](#)
Strathmore Girls' Home and Avona Church of England Home for Girls were on the same site at Glebe.
- [Church of England Training Home for Girls \(1909 - 1929\)](#)
Strathmore Girls' Home and Tress-Manning Church of England Training Home for Girls was on the same site at Glebe.
- [Church Rescue Home \(1885 - 1923\)](#)
Strathmore Girls' Home was located in the building that had previously been used as the Church Rescue Home.
- [Arden Girls' Home \(1919 - 1929\)](#)
Arden Girls' Home was located across the street from the Strathmore Girls' Home

Resources

- [Christmas Appeals Church of England Homes Glebe](#), The Sydney Morning Herald, 10 December 1925

You can view this page online by visiting <https://www.findandconnect.gov.au/entity/strathmore-girls-home/>